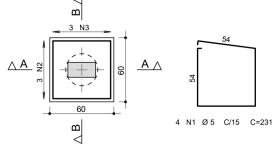


ACO	POS	BIT	QUANT	COMPRIMENTO	UNIT	TOTAL
		(mm)		(cm)	(cm)	
BT3 (X6)						
60A	1	5	24	231	5444	
50A	2	8	18	308	3744	
50A	3	8	18	210	3780	
Estaca Tipo 2 - Ø30 (X6)						
60A	1	5	120	107	12840	
50A	2	10	30	338	10140	
V11						
50A	1	8	2	768	1536	
50A	2	10	2	755	1510	
50A	3	6,3	2	80	160	
60A	4	5	39	91	3549	
V12						
50A	1	8	2	259	518	
50A	2	8	2	250	500	
60A	3	5	11	91	1001	
V13						
50A	1	8	2	420	840	
50A	2	10	2	408	816	
60A	3	5	19	91	1729	
V14						
50A	1	8	2	375	750	
50A	2	8	2	360	720	
60A	3	5	17	91	1547	
V15						
50A	1	8	2	470	940	
50A	2	10	2	450	900	
60A	3	5	22	91	2002	
V16						
50A	1	8	3	765	2295	
50A	2	10	2	765	1530	
60A	3	5	40	91	3640	
V17						
50A	1	10	2	363	726	
50A	2	10	2	360	720	
60A	3	5	16	101	1616	
V18						
50A	1	8	2	341	682	
50A	2	8	2	330	660	
60A	3	5	15	91	1365	
V19						
50A	1	8	2	435	870	
50A	2	8	2	415	830	
60A	3	5	18	91	1638	
V20A=V20B=V20C (X3)						
50A	1	8	6	315	1890	
50A	2	8	6	310	1860	
60A	3	5	42	91	3822	
V21						
50A	1	8	2	455	910	
50A	2	8	2	445	890	
60A	3	5	20	91	1820	
V22						
50A	1	8	2	379	758	
50A	2	8	2	365	730	
60A	3	5	17	91	1547	
V23						
50A	1	8	2	370	740	
50A	2	8	2	360	720	
60A	3	5	17	89	1513	
V24						
50A	1	8	2	352	704	
50A	2	8	2	345	690	
60A	3	5	16	91	1456	
RESUMO AÇO CA 50-60						
ACO	BIT	COMPR	PESO			
	(mm)	(m)	(kg)			
60A	5	495	72			
50A	6,3	2	0			
50A	8	286	113			
50A	10	163	101			
Peso Total 60A =			72 kg			
Peso Total 50A =			214 kg			

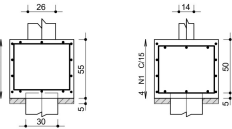
BT3 6X  
(ESCALA 1:25)

PLANTA



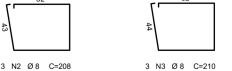
CORTE A-A

CORTE B-B



52

52



Estaca Tipo 2 - Ø30

ØX (estacas) -0.60m

ESTACA A SER UTILIZADA EM TODOS OS BLOCOS BT3

ACO DA ESTACA ANCORADA 30CM DENTRO DO BLOCO.

A ESTACA ENTRA SEM DENTRO DO BLOCO.

1:20

COBRIMENTO MÍNIMO DE 4cm USANDO ESPAÇADORES.

FOR DE 25MPa EM ATENDIMENTO A NBR122019.

REINDESMEN ESTACAS CONFORME

SONDAGEM DO LOCAL.

1:20

20 N1 Ø 5 C=107

20 N2 Ø 8 C=107

20 N3 Ø 5 C=91

20 N4 Ø 5 C=91

20 N5 Ø 5 C=91

20 N6 Ø 5 C=91

20 N7 Ø 5 C=91

20 N8 Ø 5 C=91

20 N9 Ø 5 C=91

20 N10 Ø 5 C=91

20 N11 Ø 5 C=91

20 N12 Ø 5 C=91

20 N13 Ø 5 C=91

20 N14 Ø 5 C=91

20 N15 Ø 5 C=91

20 N16 Ø 5 C=91

20 N17 Ø 5 C=91

20 N18 Ø 5 C=91

20 N19 Ø 5 C=91

20 N20 Ø 5 C=91

20 N21 Ø 5 C=91

20 N22 Ø 5 C=91

20 N23 Ø 5 C=91

20 N24 Ø 5 C=91

20 N25 Ø 5 C=91

20 N26 Ø 5 C=91

20 N27 Ø 5 C=91

20 N28 Ø 5 C=91

20 N29 Ø 5 C=91

20 N30 Ø 5 C=91

20 N31 Ø 5 C=91

20 N32 Ø 5 C=91

20 N33 Ø 5 C=91

20 N34 Ø 5 C=91

20 N35 Ø 5 C=91

20 N36 Ø 5 C=91

20 N37 Ø 5 C=91

20 N38 Ø 5 C=91

20 N39 Ø 5 C=91

20 N40 Ø 5 C=91

20 N41 Ø 5 C=91

20 N42 Ø 5 C=91

20 N43 Ø 5 C=91

20 N44 Ø 5 C=91

20 N45 Ø 5 C=91

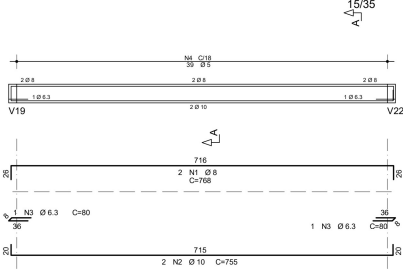
20 N46 Ø 5 C=91

20 N47 Ø 5 C=91

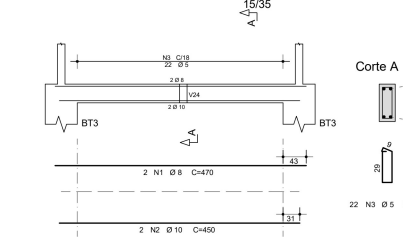
20 N48 Ø 5 C=91

20 N49 Ø 5 C=91

V11



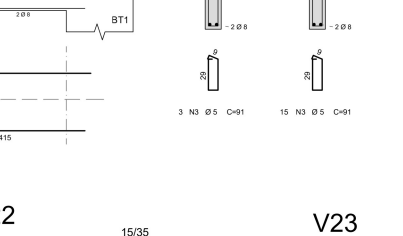
V15



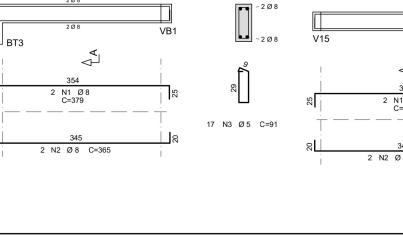
V19



V23



V27



V31



V35



V39



V43



V47



V51



V55



V59



V63



V67



V71



V75



V79



V83



V87



V91



V95



V99



V103



V107



V111



V115



V119



V123



V127



V131



V135



V139



V143



V147



V151



V155



V159



V163



V167



V171



V175



V179



V183



V187



V191



V195